

# Flooring



## **Knowledge, Quality, Service – every step of the way.**

Exceptional flooring design forms the foundation of your space, integrating seamlessly with your overall interiors.

Share your vision and priorities with us – We will share our knowledge and insight with you - guiding you through the entire project process. The result will be a value solution with less stress and peace of mind.

As a full-service commercial flooring dealer, Young Office has the resources and expertise to identify your unique project needs and make them a reality.

### **CONTACT US EARLY**

Careful planning on the front end helps avoid common pitfalls.

Early communication also supports meeting the schedule and budget with a well-coordinated, on-time installation.

We will serve you and add value every step of the way.

**Young Office — Your Complete Interior Solution with Single-Source Accountability**

DESIGN

INTERIORS

FURNITURE

FLOORING

AV

[YOUNGOFFICE.COM](http://YOUNGOFFICE.COM)

## Expert Advice & Seamless Installation

From listening and understanding your vision, to material selection and specification, project planning, procurement, installation, logistics and site supervision — **we are your one-stop flooring solution.**

### DESIGN CENTER SHOWROOMS

- **Unmatched Options** — Extensive library including carpet, LVT, vinyl, rubber, linoleum, wood, ceramic, porcelain, stone, epoxy and polished concrete.
- **Color Coded Finish Plans** — Specialized software systems create visual plans that clarify product placement, minimize waste, and reduce cost.

---

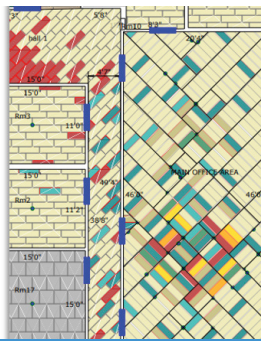
### BUDGETING YOU CAN TRUST

- **Complete Budgets** — Line-item budgets capture every detail and help eliminate surprises.
- **Competitive Pricing** — We negotiate pricing and leverage competition on your behalf.

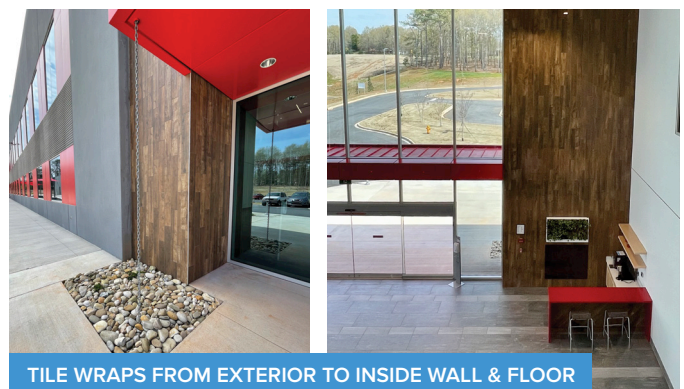
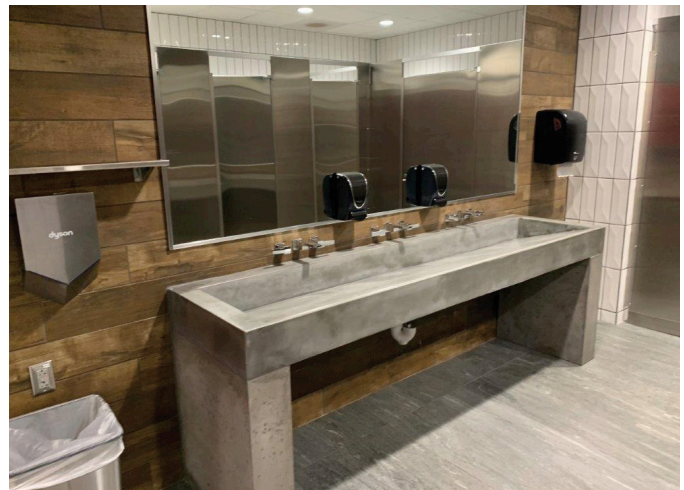
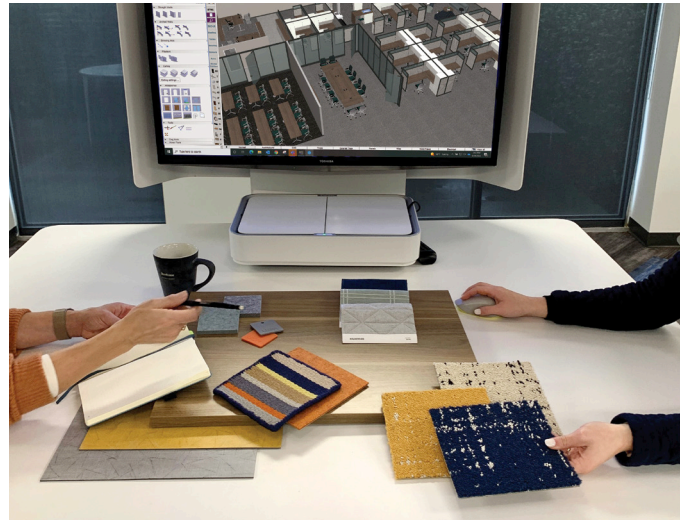
---

### PROJECT MANAGEMENT, SITE SUPERVISION & INSTALLATION

- **Pre-Construction Consulting** — Engage with our team early in the process to help mitigate risk.
- **Dependable Service & Seamless Coordination** — From small fast-track to complex multi-phase, we have the experience to coordinate and communicate with all project members.
- **Site Evaluations** — We identify challenges early to maintain your schedule and budget.
- **Concrete and Surface Prep** — Understanding site conditions is key. The finished floor is a reflection of what is underneath.
- **Installation** — Installation is the backbone of a successful project. Our experience and expertise protects your investment.



DESIGN LAYOUT PLAN TO INSTALLATION



TILE WRAPS FROM EXTERIOR TO INSIDE WALL & FLOOR